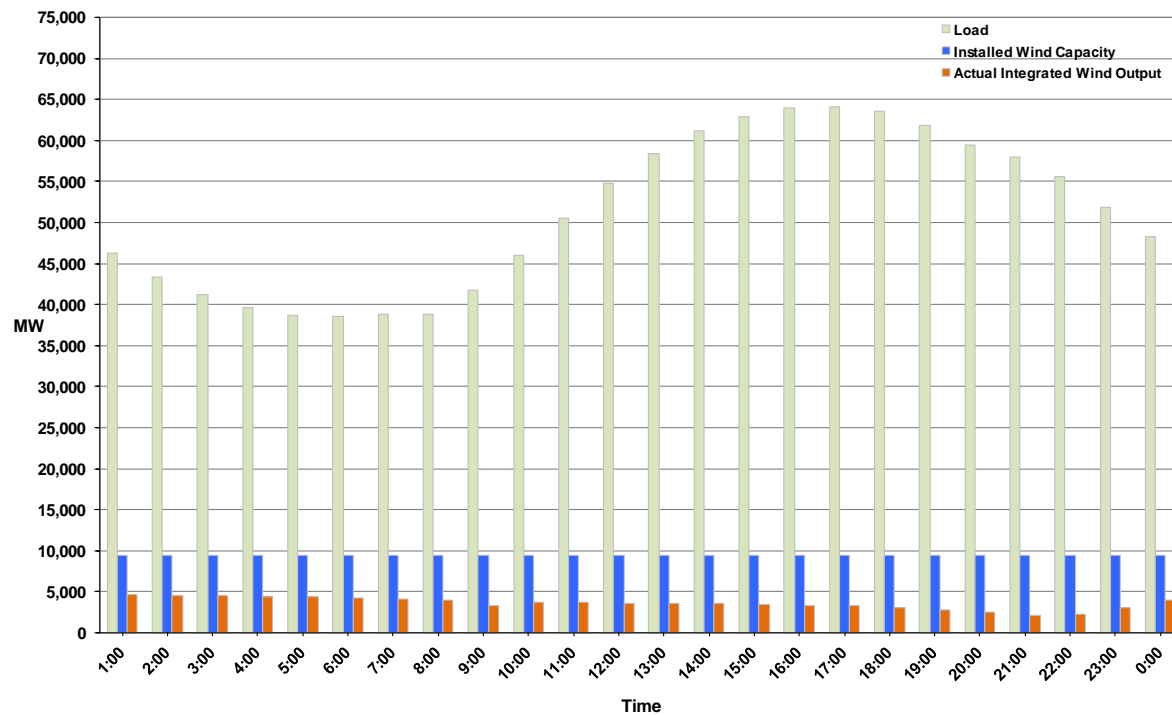




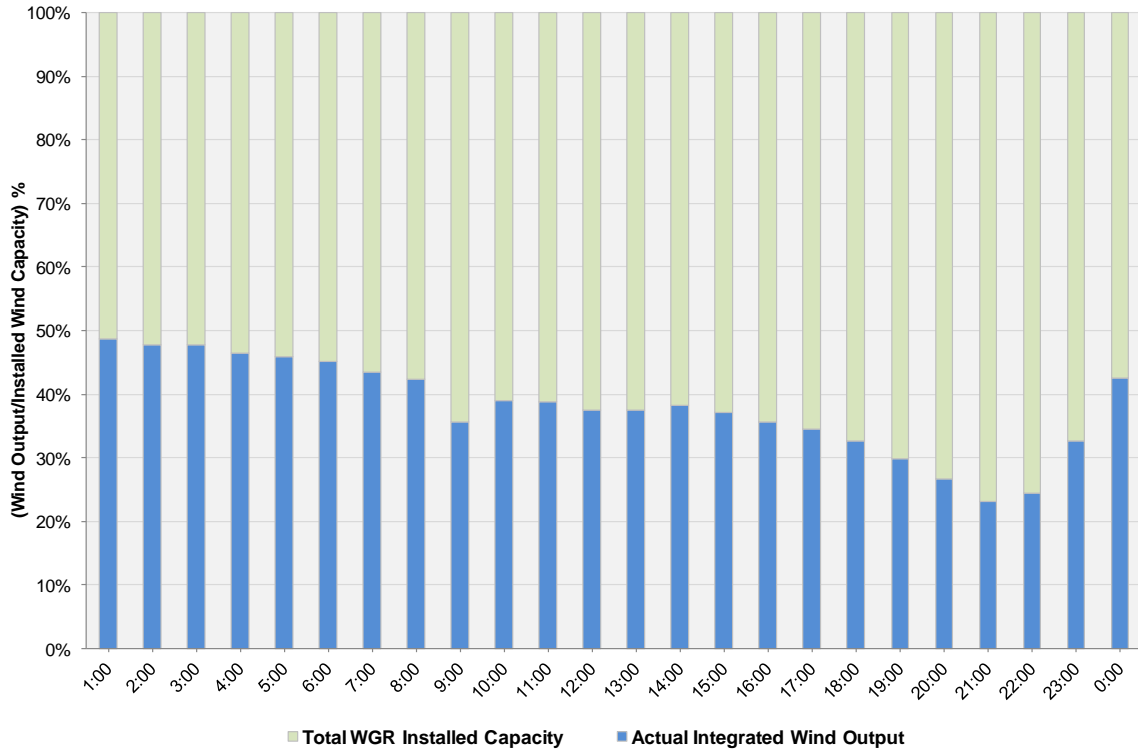
## ERCOT Grid Operations Wind Integration Report: 08/20/11

Peak Load	<b>64,149 MW</b>
Load Peak Hour	<b>17</b>
Wind over Peak	<b>3,263 MW</b>
Wind Record 06/19/11	<b>7,355 MW</b>
Max Wind Value	<b>4,658 MW</b>
Wind Peak Time	<b>00:41:00</b>
Wind Integration %	<b>10.21%</b>

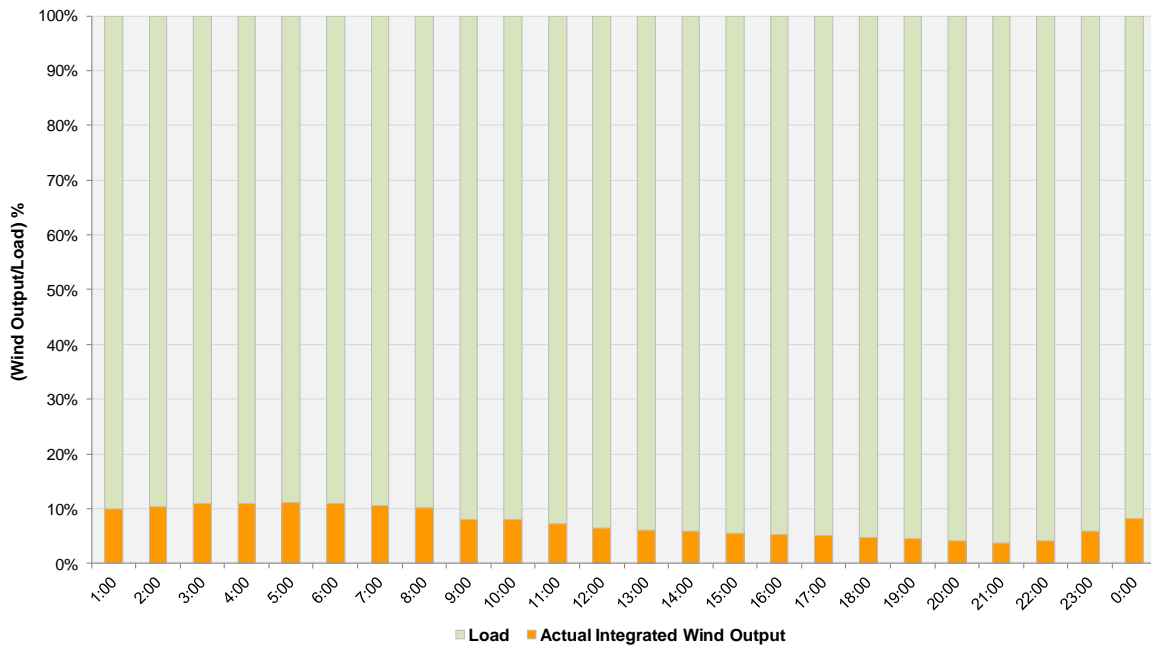
**Hourly Average Actual Load vs. Actual Wind Output  
08-20-2011**



**Actual Wind Output as a Percentage of the Total Installed Wind Capacity**  
**08-20-2011**



**Actual Wind Output as a Percentage of the ERCOT Load**  
**08-20-2011**



ERCOT Load vs. Actual Wind Output 8/13/2011 - 8/20/2011

